

RESEARCH

Open Access

# Generation of a panel of antibodies against proteins encoded on human chromosome 21

Frances K Wiseman<sup>1</sup>, Olivia Sheppard<sup>1</sup>, Jacqueline M Linehan<sup>1</sup>, Sebastian Brandner<sup>1</sup>, Victor LJ Tybulewicz<sup>2</sup>, Elizabeth MC Fisher<sup>1\*</sup>

## Abstract

**Background:** Down syndrome (DS) is caused by trisomy of all or part of chromosome 21. To further understanding of DS we are working with a mouse model, the Tc1 mouse, which carries most of human chromosome 21 in addition to the normal mouse chromosome complement. This mouse is a model for human DS and recapitulates many of the features of the human syndrome such as specific heart defects, and cerebellar neuronal loss. The Tc1 mouse is mosaic for the human chromosome such that not all cells in the model carry it. Thus to help our investigations we aimed to develop a method to identify cells that carry human chromosome 21 in the Tc1 mouse. To this end, we have generated a panel of antibodies raised against proteins encoded by genes on human chromosome 21 that are known to be expressed in the adult brain of Tc1 mice

**Results:** We attempted to generate human specific antibodies against proteins encoded by human chromosome 21. We selected proteins that are expressed in the adult brain of Tc1 mice and contain regions of moderate/low homology with the mouse ortholog. We produced antibodies to seven human chromosome 21 encoded proteins. Of these, we successfully generated three antibodies that preferentially recognise human compared with mouse SOD1 and RRP1 proteins on western blots. However, these antibodies did not specifically label cells which carry a freely segregating copy of Hsa21 in the brains of our Tc1 mouse model of DS.

**Conclusions:** Although we have successfully isolated new antibodies to SOD1 and RRP1 for use on western blots, in our hands these antibodies have not been successfully used for immunohistochemistry studies. These antibodies are freely available to other researchers. Our data high-light the technical difficulty of producing species-specific antibodies for both western blotting and immunohistochemistry.

## Background

Down syndrome (DS) is the most common genetic cause of intellectual disability and is also associated with a number of other medical problems including heart defects, early onset Alzheimer's disease and leukaemia [1]. DS is caused by trisomy of human chromosome 21 and is a complex genetic disorder in which the phenotype arises from abnormal dosage of otherwise normal genes.

In order to investigate the relationship between phenotype and causative dosage sensitive genes in DS, we created the Tc1 mouse strain which carries a freely segregating copy of human chromosome 21 (Hsa21) in

addition to a full complement of mouse chromosomes [2]. There are deletions in this Hsa21 [2] but at least 83% of the human genes are present in three copies (one human, two endogenous mouse homologs). Therefore, Tc1 mice are trisomic for the majority of genes on Hsa21 and several different investigations have shown they do indeed have phenotypes which are strikingly similar to those found in individuals with DS [2-5].

However, the Tc1 mouse is mosaic for Hsa21, owing to stochastic loss of the human chromosome in cells after fertilisation. Thus the mice have some cells that contain Hsa21 and some that are euploid, which have the normal mouse chromosome complement. The degree of mosaicism differs between tissues and is reported to vary between individual mice; in one survey carried out by genomic quantitative-PCR, on 8 animals, between 7 and 77% of cells in the brain of Tc1 mice

\* Correspondence: e.fisher@prion.ucl.ac.uk

<sup>1</sup>Department of Neurodegenerative Disease, UCL Institute of Neurology, Queen Square, London WC1N 3BG, UK

Full list of author information is available at the end of the article

carried the Hsa21 (mean 53%) [2]. When chromosome 21 content was assessed directly by fluorescence in situ hybridisation with a human specific probe on metaphase spreads of Tc1 brain cells, between 36 and 94% of the cells carried Hsa21 [2]. Between 2-4% of people with DS also have a mixture of euploid and trisomic cells [6,7]. A low proportion of trisomic cells in these individuals is associated with a reduced severity and incidence of DS associated phenotypes [8]. Additionally, people without DS have also been reported to be mosaic for Hsa21 trisomic cells, in particular individuals with Alzheimer's disease have been reported to have an elevated number of Hsa21 trisomic cells within their brains [9-11]. The phenotypic consequences of these observations have yet to be fully explored.

A study of Hsa21 mosaicism in the Tc1 mouse model may provide insight into these issues. In particular, variability in DS associated phenotypes observed in the Tc1 mouse model may result in part from variation in the number of Hsa21-containing cells in specific tissues and/or cell types. For example, only 73% of Tc1 mice show heart defects at E14.5, whereas the remaining 27% of their genetically identical, Hsa21 positive, littermates do not [2]. This may be due to variable penetrance of the effects of the dosage-sensitive Hsa21 genes, and/or it may be due to mosaicism in the hearts of these animals. In addition, if we could identify Hsa21 positive cells in vivo this may help us investigate the effects of Hsa21 trisomy at the cellular level. Therefore, in an effort to determine which cells in Tc1 mice carry Hsa21 and thus measure levels of mosaicism, we generated antibodies against proteins encoded by Hsa21 that do not cross react with mouse homologues. We focussed our study on proteins expressed in brain as this is our primary organ of interest.

We successfully generated antibodies that preferentially recognised human but not mouse forms of Hsa21-encoded proteins as shown by western blotting. However these antibodies were not compatible with immunohistochemical methods and therefore could not be used to identify individual cells that carry Hsa21. We note that these antibodies are available for other interested laboratories to use.

## Results

### Choice of candidate proteins

We aimed to generate novel human-specific antibodies raised against proteins encoded on Hsa21 to identify Hsa21 positive cells in our Tc1 mouse model of DS. Our principal goal was to produce a human-specific antibody that did not react with mouse proteins and that was highly expressed in the adult brain as this is our main organ of interest. We used published data and online resources (NCBI- Gene Expression Nervous

System Atlas, Affymetrix SymAtlas/BioGPS) to identify candidate genes that were reported to be expressed widely in the brain (Table 1). To avoid generating antibodies against hypothetical proteins we prioritised targets for which there was evidence of a functional protein. Regions of low homology between the human protein and the mouse homologue were then identified by performing Clustal W alignments. In the case of one gene, *ADARBI*, an exon unique to humans was identified.

The secondary structure and accessibility of these low homology regions were modelled using PHD and PROF programmes that were accessed from the Predict Protein website <http://cubic.bioc.columbia.edu/predictprotein/>. Additionally, the regions were checked against published protein structures to confirm accessibility. The antigenicity of sequences was also estimated using the method of Jameson and Wolf which combines indicators of hydrophathy, secondary structure and structural flexibility [12]. Candidate sequences were also checked for consensus sequences for posttranslational modifications including signal sequence cleavage, glycosylation, phosphorylation, and myristoylation using algorithms available from the Predict Protein website [13,14].

Candidate regions that were predicted to be accessible, not post-translationally modified, and exhibited a moderate/high antigenicity index, were checked for similarity with mouse proteins using blastp <http://blast.ncbi.nlm.nih.gov/Blast.cgi>. Those that were highly similar to mouse proteins were discarded as candidates. Ten candidate polypeptide sequences in eight candidate proteins were identified: an RNA editase (*ADARB1*), a Golgi-resident galactosyltransferase (*B3GAL-T5*) (two sequences), a potential neurodevelopmental protein (*DOPEY2*), the Golgi enzyme formimidoyltransferase-cyclodeaminase (*FTCD*), an RNA processing enzyme (*RRP1*) (two sequences), superoxide dismutase 1 (*SOD1*), a cation membrane channel (*TRPM2*) and a histone deubiquitinase (*USP16*).

Expression of *ADARB1*, *B3GAL-T5*, *DOPEY2*, *FTCD*, *RRP1*, *TRPM2* and *USP16* was investigated by RT-PCR. Total RNA was isolated from adult Tc1 mouse brain and non-transchromosomal littermate control brain, and subjected to RT-PCR (n = 5). Significant expression of *FTCD* could not be detected in human or Tc1 brain (Figure 1D). Therefore the two identified *FTCD* polypeptide sequences were discarded as potential candidates against which to raise an antibody. The expression of the other genes of interest was confirmed in the Tc1 brain (Figure 1). Elevated expression of *SOD1* in the Tc1 brain had been previously demonstrated by western blot [2].

Production, conjugation of the selected peptides to Keyhole limpet haemocyanin (KHL) and injection of the

**Table 1 List of Hsa21 genes present in the Tc1 mouse that are expressed in adult brain**

Hsa21 encoded Protein	Evidence of expression in brain	Candidate regions and/or reasons for discontinuation
HSPA13/ STCH	Ubiquitous expressed [17]	No human specific region
NRIP1	Expressed in mouse brain [18] and Gensat images 24262 and 24263)	No human specific region
USP25	Basal expression in all human tissues but high expression only in fetal brain and adult testis [19,20]	N/A
NCAM2	Expression in adult human brain [21]	No human specific region
MRPL39	Expressed in adult mouse and human brain [18,21]	Possible region (aa 1-42 MEALAMGSRALRLWLVPGGGIKWRFIATSSASQLSPTL <del>TE</del> ) is putative mitochondrial targeting sequence [13]
JAM2	Expression in brain restricted to vascular endothelial cells [22,23]	N/A
GABPA	Expression in adult mouse brain [18]	No human specific region
ADAMTS5	Expression in adult mouse brain restricted to Schwann cells [24]	N/A
ADAMTS1	Expression in adult rat brain restricted to neuron subpopulation [25]	N/A
USP16	Expressed in human and mouse brain [18,21]	1 region used for antibody generation (see table 2).
CCT8/ CCTQ	Expressed in mouse brain [18,26,27]	No human specific region
BACH1	Expressed in adult mouse and human brain [21,28]	Possible region (aa 676-716 RPPAVLPPCARGNSEPGYARGQESQOMSTATSEQAGPAEQCR) contains a putative disulphide bond
GRIK1	Expressed in adult mouse and human brain [29,30]	No human specific region
TIAM1	Expression in adult mouse and human brain [18]	No human specific region
SOD1	Expressed in human and mouse brain [31,32]	1 region used for antibody generation (see table 2)
CBR1	Expressed in human adult and fetal brain [21,33]	No human specific region
CBR3	Expressed in human adult brain [34]	Possible region (aa 236-242 GKDSI) similarity with mouse Hy-3 and DNA isomerase 1
DOPEY2/ C21orf5	Expression in cortex, cerebellum, and hippocampus in adult, widespread expression in embryonic and fetal brain [35-38]	1 region used for antibody generation (see table 2), 2 <sup>nd</sup> region (aa. 671-684 LAANDSERKNSWEP) contains N-glycosylation site
MORC3	Expressed in adult human brain [21]	Possible region cross (aa 665-696 DAVILPSCVEAEAKIHETQETTDKSADDAGC) similar to mouse Btnl2 and KIF21B
SIM2	Long isoform expressed in adult mouse brain particularly expressed in amygdala, hippocampus and thalamus, expression in embryonic and fetal brain, short isoform not expressed in adult brain [39-41]	Possible region (long form aa 613-624 GAAPAASGLAC) predicted low antigenicity
DSCR3/ DCRA	Expressed in human and mouse adult brain [21,42]	No human specific region
DYRK1A	Expression in adult mouse and human brain [43-45]	No human specific region
KCNJ6/ GIRK2	Expressed in subset of cells throughout mouse brain [46-48]	N/A
ETS2	Expressed in human and mouse brain [18,49]	No human specific region
PSMG1/ DSCR2	Expressed in adult mouse brain [18,50]	No human specific region
B3GALT5	Expressed in adult human and mouse brain [18,51]	1 region used for antibody generation (see table 2)
PCP4/PEP- 19	Expressed restricted to cerebellum and olfactory bulb in adult mouse and caudate-putamen in human [52-54]	No human specific region
DSCAM	Expressed in adult mouse and human brain [55,56]	No human specific region
BACE2	Expressed in adult mouse and human brain but at low levels [18,57-60]	Human specific region of 396 aa isoform (aa380-396 LQCLKFPGLSQQR <del>M</del> ) predicted low antigenicity
UMODL1	Expression in embryonic mouse brain restricted to olfactory and vomeronasal neurons [61]	N/A
ABCG1	Expressed in adult human and mouse brain [21,62,63]	No human specific region

**Table 1 List of Hsa21 genes present in the Tc1 mouse that are expressed in adult brain (Continued)**

WDR4	Basal expression in adult tissues only high expression in fetal tissues [64]	N/A
PKNOX1/ PREP1	Expressed in adult human and mouse brain [65,66]	No human specific region
CBS	Expressed in astrocytes and Bergmann glial cells only in adult mouse brain [67]	N/A
U2AF1	Expressed in adult mouse and human brain [21,68]	No human specific region
CSTB	Expressed in adult mouse and human brain (astrocytes and neurons) [18,21,69]	No human specific region
NNP1/RRPIB	Ubiquitously expressed in all human tissues [21,70]	2 regions used for antibody generation (see table 2)
AGPAT3	Expressed in adult mouse brain [71]	No human specific region
TRAPPC1/ TMEM1	Expressed in adult human brain [21]	No human specific region
PWP2/ PWP2H	Ubiquitously expressed in human adult tissue [72]	No human specific region
PFKL	Expressed in adult brain [21,73]	No human specific region
TRPM2	Expressed in human and mouse brain also in microglia cell lines and cultured neurons [74-77]	1 region used for antibody generation (see table 2)
PTTG1IP	Expressed in human brain [21,78]	1 possible region (aa 1-29 MAPGVARGPTYWRLRLGGAAALLLLIPV) putative signal sequence [14]
ADARB1/ RED1	Expressed in adult mouse and human brain [79-82]	1 region used for antibody generation (see table 2)
FTCD	Expressed in fetal human brain and in numerous mammalian cells types [83,84]	2 possible human specific regions (long isoform aa 423-446 GGPTGGSEAGSLCAADAGGDGGLA and aa 465-495 PPGGQSPGDGRVWRIFQRAHQPEGHRRGI)
LSS	Expressed in adult mouse brain [18]	No human specific region
S100Beta	Expression in adult mouse and human brain (particularly astrocytes and spinal, medullar, pontine and deep cerebellar neurons) [18,21,85]	No human specific region
PRMT2	Expressed in human adult brain [21,86]	No human specific region

Evidence for expression in adult brain is listed in column two, including evidence for restriction of expression to a subset of cells. In column three candidate regions with moderate or low homology with their mouse ortholog are identified and any rational for not using the region to attempt to generate an antibody is described.

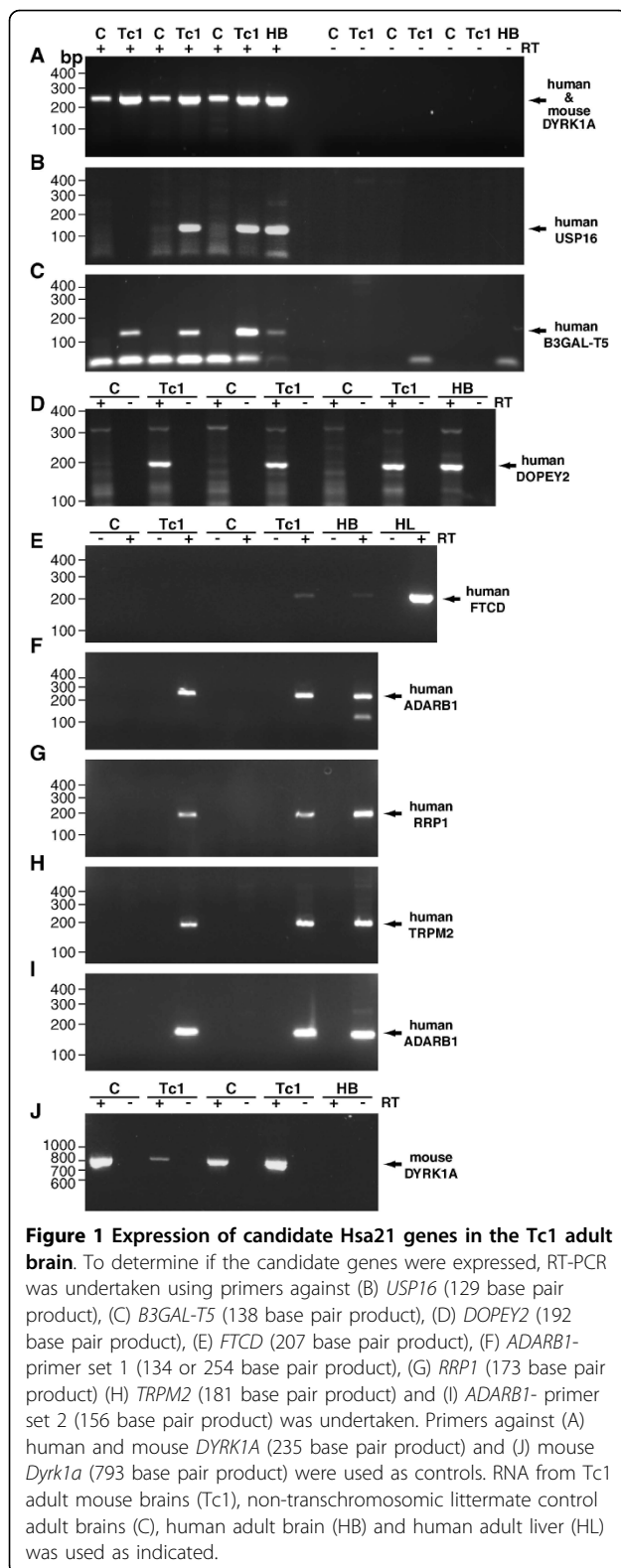
KHL-peptides into New Zealand Rabbits was undertaken (21st Century Biochemicals). In the case of B3GAL-T5 and RRP1 a mixture of two peptides were injected into each rabbit (Table 2). Sera isolated from the rabbits after the fifth, sixth and seventh KHL-peptide boost was affinity purified against the peptide. Sera from the rabbits challenged with B3GAL-T5 and RRP1 peptides were affinity purified against both peptides separately.

#### Antibodies that recognise a Tc1 Hsa21 specific protein RRP1

One of the anti-RRP1 antibodies (9644-B), which was purified against peptide B, recognised a 50 kDa band on western blots of Tc1 total brain proteins; consistent with the predicted molecular weight of RRP1 (Figure 2A). A similar band was not observed in non-transchromosomal control mice, indicating that this antibody may specifically react with human RRP1. RRP1 peptide sequence B is unique to the human protein and is not found in mouse RRP1. In addition to the Tc1 specific

band a number of weaker additional bands were observed in samples of Tc1 and non-Tc1 total brain proteins. These are likely to represent non-specific interaction of the polyclonal antibody with other brain proteins. Despite the relative specificity of the 9644-B antibody on western blot, a similar pattern and intensity of staining was observed on Tc1 and non-transchromosomal control mouse whole brain sections; intracellular staining was observed through-out the brain in both Tc1 and control non-transchromosomal mice (Figure 3A and 3B). Therefore, although 9644-B may be a suitable antibody for western blot studies of RRP1, it cannot be used to identify Hsa21 positive cells in the brains of Tc1 mice.

Affinity purified antibody raised against RRP1 peptide B purified from the second rabbit (9643-B) did not recognise a Tc1 specific band (Figure 2B). A 50 kDa protein was weakly detected using this antibody in samples of Tc1 and control mouse brain; however, peptide B does not share any homology with mouse RRP1



therefore the 50 kDa band detected after probing with this antibody is highly unlikely to be RRP1.

An antibody affinity purified against RRP1 peptide A (9644-A) did recognise a band consistent with the molecular weight of RRP1 in samples of both Tc1 and control brain (Figure 2C). Five of the nineteen amino acids of peptide A are homologous with the mouse RRP1 protein sequence including a sequence (K\*PA) with high predicted antigenicity. Therefore the antibody purified against peptide A may recognise both mouse and human RRP1 and therefore is not useful to identify Hsa21 positive cells in the Tc1 model. An antibody affinity purified against peptide A from the other rabbit (9643-B) did not consistently recognise a band corresponding to the molecular weight of RRP1 (Figure 2D). This suggests that RRP1 peptide A is not a reliable antigen for the production of rabbit polyclonal antibodies.

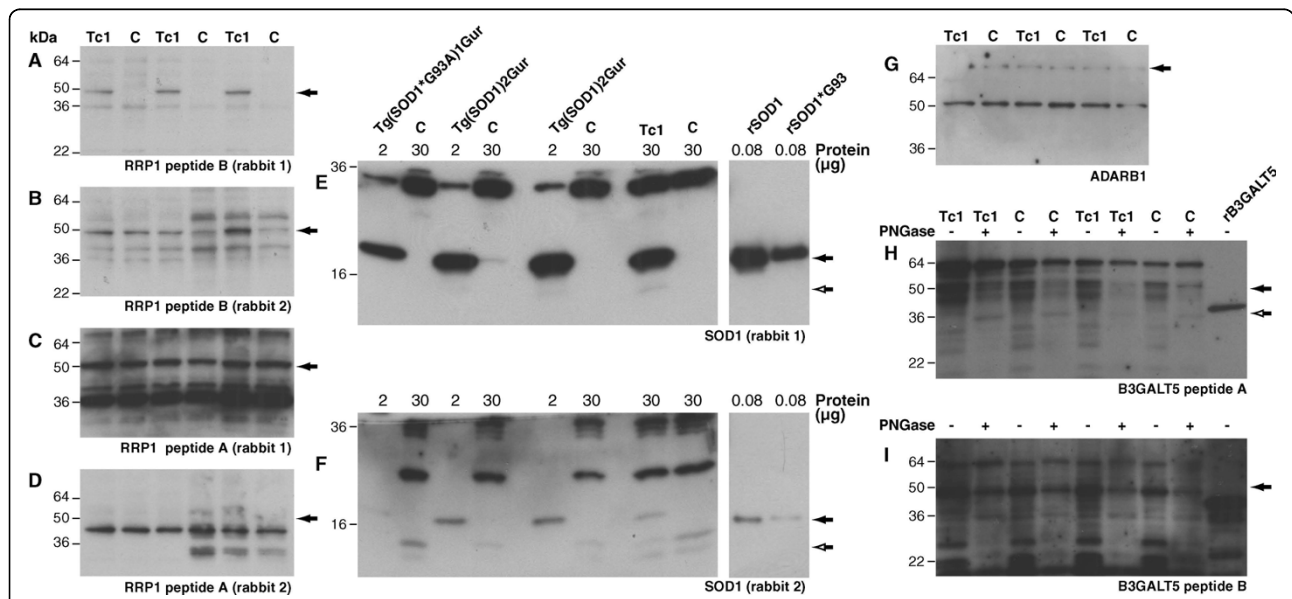
#### Antibodies that did not recognise a Tc1 unique product *SOD1*

Immunisation with a single *SOD1* peptide generated anti-*SOD1* antibodies (9638 and 9637) that recognised a Tc1 specific band on western blots of total brain protein (Figure 2E and 2F). The size of the bands recognised is consistent with the known molecular weight of the *SOD1* monomer (16 kDa). These antibodies also detected a band of a comparable molecular weight in samples of total brain proteins isolated from transgenic mice that over-express wild-type or mutant (*SOD1*<sup>G93A</sup>) human *SOD1* and in samples of recombinant human *SOD1* (wild-type or *SOD1*<sup>G93A</sup>) (gift of Ruth Chia) (Figure 2E and 2F). The 16 kDa band was not observed in samples of brain from non-transchromosomal control mice. However, after long exposures a weak band that was smaller than the predominant 16 kDa band was detected by both 9637 and 9638 in Tc1 and control mouse brain samples. This smaller band may be mouse *SOD1*; thus antibody 9637 and 9638 may weakly cross-react with mouse *SOD1*. Moreover, these antibodies generated an intracellular staining pattern of similar intensity on Tc1 and non-transchromosomal control mice brain sections, which were either paraffin-embedded or cryopreserved (Figure 3C-F, data not shown). The antibody does not recognise cells specifically in the Tc1 brain and therefore cannot be used to identify these Hsa21 positive cells in our mouse model for future studies. This result may occur because the polyclonal antibodies generated recognise non-*SOD1* proteins and weakly cross-react with mouse *SOD1* in both Tc1 and control brain, or that the antibodies

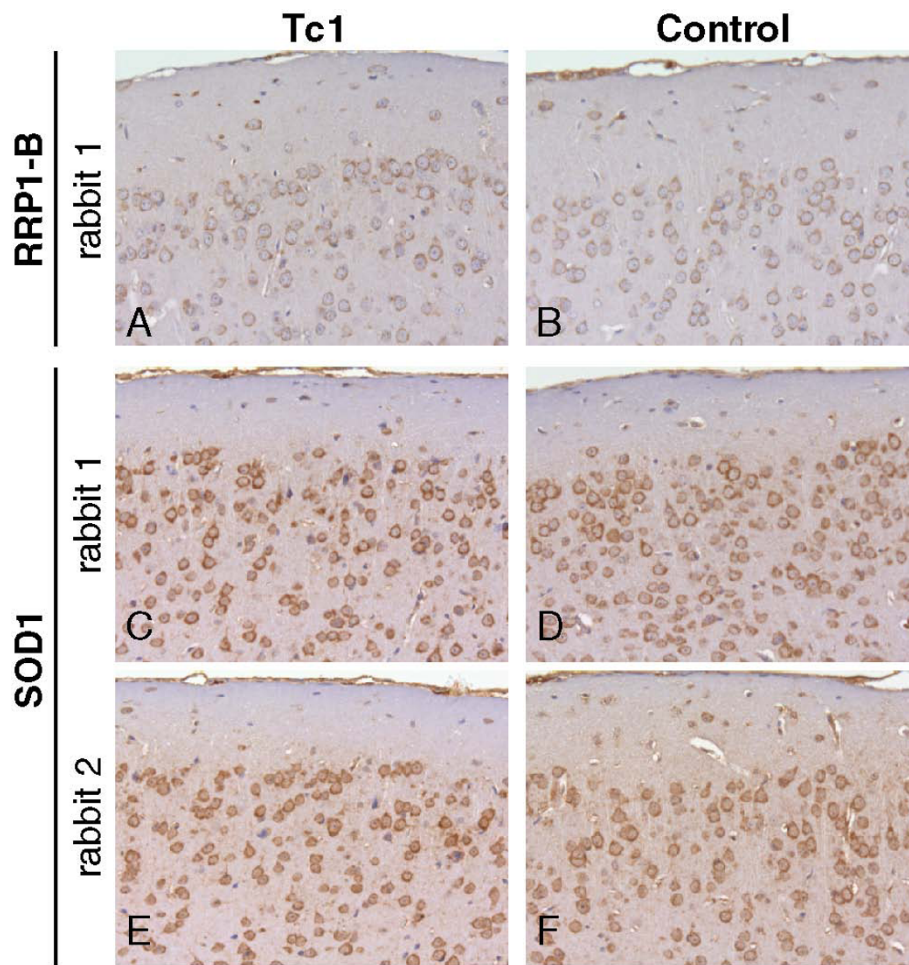
**Table 2 List of Hsa21 Genes and peptides used to immunise rabbits.**

Candidate Protein	Molecular weight of protein (kDa)	Peptide used to immunise rabbits (protein accession numbers)	Mean antigenicity index (Jameson and Wolf)
Double-stranded RNA-specific editase 1 (ADARB1)	80	Acetyl-CNHGSLQPRPPGLSDPS-amide (ENSP00000374512, amino acid 478-495)	1.088889
B-1,3-galactosyltransferase 5 (B3GALT5)	36	<b>A.</b> Acetyl-KERMVKGKQLKTF-C-amide (ENSP00000343318, ENSP00000369994, ENSP00000369992, ENSP00000381699, ENSP00000403209 amino acid 82-93) <b>B.</b> Acetyl-CAAETKEVDQESQRHGDI-amide (ENSP00000343318, ENSP00000369994, ENSP00000369992, ENSP00000381699, ENSP00000403209, amino acid 103-119)	0.720833 1.547647
Protein Dopey 2 (DOPEY2)	258	Acetyl-CFRPVKQRYSVRNSVS-amide (ENSP00000382104, amino acid 455-470)	1.244375
Ribosomal RNA processing protein 1 homolog A (RRP1)	53	<b>A.</b> Acetyl-GDALSQKRSEKPPAGSIC-amide (ENSP00000291569, amino acid 257-275) <b>B.</b> Acetyl-CGARQRRRTPRPLTSARAKA-amide (ENSP00000291569, amino acid 428-446)	1.745 1.839474
Transient receptor potential cation channel subfamily M member 2 (TRPM2)	165, 177	Acetyl-CSWRLQ[Abu]PFGNNDKQESL-amide (ENSP00000381023, ENSP00000300481, ENSP00000300482, ENSP00000393982, ENSP00000381026, amino acid 43-59)	1.105882
Superoxide dismutase 1 (SOD1)	16	Acetyl-FEQKESNGPVKVGSGIC-amide (ENSP00000270142, amino acid 21-36, ENSP00000374645, amino acid 6-17)	0.9875
Ubiquitin carboxyl-terminal hydrolase 16 (USP16)	94	CSTEEVDMKNINMDNDLLEV-amide (ENSP00000382857, ENSP00000382858, ENSP00000334808, amino acid 530-548)	0.930556

Added conjugating cysteine are highlighted in bold, amino acids that are only found in human sequence are underlined. Abu, abbreviation for amino-n-butyric acid, used to substitute for an internal cysteine residue.



**Figure 2 Western blot of total brain proteins probed with affinity purified rabbit polyclonal antibodies.** Total brain proteins from Tc1 adult mice (Tc1+), non-transchromosomal littermate control mice (C), transgenic mice that express wild type human SOD1 (Tg(SOD1)2Gur), transgenic mice that express mutant human SOD1 (Tg(SOD1\*G93A)1Gur) and non-transgenic littermate control mice (control), recombinant human SOD1 wild-type (rSOD1) and human SOD1 G93A (rSOD1\*G93A) mutant protein and human recombinant B3GALT5 (amino acids 29-128) conjugated to GST were used as indicated. To compensate for the high expression level of the human SOD1 transgene in the Tg(SOD1)2Gur and Tg(SOD1\*G93A)1Gur mice a lower amount of total brain proteins were loaded per lane as indicated. Western blots were probed with affinity purified anti-bodies raised against (A) RRP1 peptide B (9644-B), (B) RRP1 peptide B (9643-B), (C) RRP1 peptide A (9644-A), (D) RRP1 peptide A (9643-B), (E) SOD1 peptide (9638), (F) SOD1 peptide (9637), (G) ADARB1 peptide (9528), (H) B3Gal-T5 peptide A (9598-A) and (I) B3Gal-T5 peptide B (9598-B). Closed arrows indicate band of interest, (A-I), open arrows indicate potential mouse SOD1 band (E and F) and 36 kDa band in PNGase treated samples (H).



**Figure 3** Affinity purified anti-RRP1 and SOD1 antibodies do not specifically label cells in the Tc1 mouse model. A similar pattern and intensity of staining is observed in adult Tc1 (A, C, E) and non-transchromosomal littermate control (B, D, F) cortical brain sections stained with affinity purified rabbit polyclonal antibodies generated against (A and B) RRP1 peptide B (9644-B), (C and D) SOD1 peptide (9638) and (E and F) SOD1 peptide (9637). Paraffin embedded sections were pretreated with protease prior to incubation with rabbit polyclonal antibodies, nuclei were counter-stained with haematoxylin. Scale bar = 50  $\mu$ m.

generated only recognise denatured human SOD1. We have previously tested whether a number of commercially available anti-SOD1 antibodies specifically label cells in Tc1 brain sections and found that these antibodies were not specific (data not shown).

#### **ADARB1**

An affinity purified antibody (9528) that reacted weakly with a band consistent with the known molecular weight of the protein, 80 kDa, was isolated from one rabbit injected with the ADARB1 peptide (Figure 2G). However, this band was observed in samples of total brain proteins from both Tc1 and non-transchromosomal control mice. As ADARB1 peptide sequence used to challenge the rabbits was unique to human ADARB1 and not found in mouse, the protein recognised by this antibody is unlikely to be ADARB1. No signal consistent

with the molecular weight of ADARB1 was observed when western blots of total brain proteins were probed with affinity purified antibody generated from the second rabbit (9529), which was challenged with ADARB1 peptide (data not shown).

#### **B3GALT5**

Affinity purified antibodies raised against B3GAL-T5 peptides were used to probe western blots of total brain proteins from Tc1 and control mice and recombinant glutathione-S-transferase (GST) tagged human B3GAL-T5 (amino acids 29-128, Abnova). Recombinant human B3GAL-T5 was detected using both antibodies (Figure 2H and 2I). A predominant band of 64 kDa and weaker bands of around 50 kDa were detected in western blots of Tc1 and control samples probed with antibodies affinity purified against peptide A (9598-A) (Figure 2H). A

predominant band of 50 kDa and weaker bands of 64, 36 and approximately 28 kDa were detected in western blots of samples of total brain proteins from Tc1 and control mice that were probed with antibodies affinity purified against peptide B (9598-B) (Figure 2I). The molecular weight of human B3GAL-T5 is 36 kDa. However, B3GAL-T5 contains three N-glycosylation sequences (amino acids 130, 174 and 231) that may be occupied in vivo. Indeed in COS-7 cells a variety of B3GAL-T5 glycoforms of between 37-50 kDa are detected by western blot [15]. To investigate if the protein bands detected in samples of Tc1 and control brain are glycosylated forms of B3GAL-T5 samples of Tc1 and control brain proteins were treated with PNGase F, an enzyme that cleaves protein-attached N-linked glycans, before western blotting. De-glycosylation of endogenous proteins was confirmed by checking that the glycoprotein PrP exhibited the expected size shift after PNGase F treatment (data not shown). Enrichment of a 36 kDa protein was observed in Tc1 and control brain samples after treatment PNGase F on western blots probed with the antibody affinity purified against peptide A (9598-A), consistent with this antibody recognising endogenous B3GAL-T5 (Figure 2H). No enrichment in a 36 kDa band was observed in the brain samples treated with PNGase F that were probed with the antibody affinity purified against peptide B (9598-B) (Figure 2I). This result suggests that the 50 kDa protein recognised by antibody 9598-B is not a glycosylated form of B3GAL-T5.

#### **DOPEY2, TRPM2 and USP16**

Affinity purified rabbit polyclonal antibodies raised against DOPEY2 and TRPM2 and USP16 peptides did not react with a band of the predicted molecular weight, in western blots of Tc1 and non-transchromosomal total brain proteins (data not shown). In addition the pattern and intensity of staining observed in Tc1 and non-transchromosomal control paraffin-embedded or cryopreserved brain sections was similar, indicating that these antibodies do not recognise a Hsa21 specific product (data not shown).

#### **Discussion**

In order to specifically detect cells carrying Hsa21 in our Tc1 mice, we carried out extensive literature searches of both commercial and basic research resources and were unable to find suitable antibodies that could be used on fixed tissues and primary cell cultures. Many antibodies to Hsa21 derived proteins exist, but none that we could find specifically recognised Hsa21 positive cells in Tc1 mouse brain sections and not control non-transchromosomal mouse sections. Therefore we attempted to generate Hsa21 antibodies that we could use to identify Hsa21 carrying cells in our model.

From bioinformatics analysis, we identified eight genes which were present in the Tc1 mouse and which might make suitable candidates for further analysis. One of these, *FTCD*, was not expressed in brain and so we generated eighteen different antibodies raised against amino-acid sequences identified from the remaining seven genes, selecting only sequences which were divergent between mouse and human, and likely to be moderately/highly antigenic.

We generated a panel of antibodies, of which one antibody (9644-B) raised against RRP1 appeared to be human specific on western blots, although proved unsuitable for immunohistochemistry and two new antibodies raised against SOD1 (9638 and 9637) that appear to preferentially recognise human SOD1 on western blots, but do not recognise Hsa21 positive cells in Tc1 brains by immunohistochemistry.

#### **Conclusion**

Having surveyed 295 genes on Hsa21 we are left with three antibodies that we can use for western blot analysis that will preferentially bind to human protein, and none that will work by immunohistochemistry. This illustrates the difficulty of making antibodies that only recognise a specific human protein but not its mouse homologue, even with extensive knowledge of the genes available, their likely antigenicity and the degree of conservation between mouse and human. We will now go on to other methods for detecting Hsa21 in tissue sections and cultured cells, and we note that the antibodies we have generated are available to interested laboratories.

#### **Methods**

##### **Animal Welfare**

Mice were housed in controlled conditions in accordance with guidance issued by the Medical Research Council in *Responsibility in the Use of Animals for Medical Research* (1993) and all experiments were carried out under License from the UK Home Office.

##### **DNA extraction and Genotyping**

DNA was extracted from tail tip (approximately 3mm) from all samples analysed. Tail tip is lysed overnight using Proteinase K digestion in nuclei lysis buffer (Promega), plus 0.12 M EDTA at 55°C. Proteins are precipitated from the resultant lysate by addition of protein precipitation solution (Promega), DNA is then precipitated with isopropanol and resuspended in DNase free water. Tc1 mice were genotyped using PCR (Tc1 specific primers f: 5'-GGTTTGAGGGAACACAAAGCTTAACTCCCA-3' r: 5'-ACAGAGCTACAGCCTCTGACACTATGAACT-3', control primers f: 5'-TTACGTCCATCGTGGACAGCAT-3' r: 5'-TGGGCTGGGTGTTAGTCTTAT-3'). Tc1 mice



were taken from a colony maintained by mating Tc1 females to F1(129S8 × C57BL/6) males. Both SOD1 transgenics were taken from colonies maintained by crossing male transgenics to female C57BL/6J (Jackson Laboratories, Bar Harbour). SOD1 transgenic mice (Tg(SOD1)2Gur, Jackson and Tg(SOD1\*G93A)1Gur; Jackson Laboratories, Bar Harbour) were genotyped by PCR (SOD1 specific primers f: 5'-CATCAGCCC TAATCCATCTGA-3' r: 5'-CGCGACTAACAATCAAAGTGA-3', control primers f: 5'-CTAGGCCACAGAATTGAAAGATCT-3' r: 5'-GTAGGTGGAAATTCTAGCATCATC-3').

#### RNA extraction and RT-PCR

RNA was extracted from whole brains from 6-10 week old Tc1 and age and sex matched non-transchromosomal controls. Total RNA was extracted using TRIzol reagent (Invitrogen), precipitated as per manufacturer's instructions and resuspended in DNase-free water. Amounts of RNA were equalised and cDNA was generated using a standard reverse-transcription protocol using random primers (Promega), Superscript II (Invitrogen), First Strand Buffer (Invitrogen) and dNTPs (Promega). PCR using primers which amplify a PCR product from both mouse *Dyrk1A* and human *DYRK1A* (f: 5'-GGAGAGACTTCAGCATGCAAAC-3' r: 5'-GCTGGGTCACGGAAGGTTTG-3') or mouse *DYRK1A* (f: 5'-CAAGAAAACAGCTGATGAAGG-3' r: 5'-AGCCCCTTGTCTCATCGC-3') were used to check cDNA. PCR using primers designed to raise a product against human but not mouse *FTCD* (f: 5'-GAATGCGTCCCCAACTTTTCG-3' r: 5'-GTCGATAAGTCGGGAAGCTAC-3'), *USP16* (f: 5'-AAGCCTTCAGTTTGGCTG-3' r: 5'-GTCCAAACTAAGAACCAGAC-3'), *DOPEY2* (f: 5'-ACCTGAGGTACTCCTTGTTG-3' r: 5'-CCAGGAGAGGAAATAACCCG-3'), *TRPM2* (f: 5'-GTTCGTGGATTCCTGAAAAC-3' r: 5'-TCCAAGTGCTGCTCATGC-3' and f: 5'-TGGCCGTACGCTCCACTTC-3' r: 5'-TAGTGAGCCCCGAACCTCAGC-3'), *B3GAL-T5* (f: 5'-CACTGTGGCTTTAGCTTTCAAAC-3' r: 5'-GGATTTAGACTGTACATGC-3'), *ADAR1* (f: 5'-TTTAGGCTGAAGGAGAATGTC-3' r: 5'-CCTCTTGCTTTACGATTTGGG-3' and f: 5'-GTCTCGCTTTACACCCAG-3' r: 5'-CCTCTTGCTTTACGATTTGGG-3') and *RRP1* (f: 5'-TCCCTGAAATGAGATCCAG-3' r: 5'-TACACCCCTCCTCCTGCTC-3') were used to check the expression of these genes from Hsa21.

#### Western blotting

Whole brain from Tc1, Tg(SOD1)2Gur, Tg(SOD1\*G93A)1Gur and aged and sex matched control non-transgenic mice was homogenized in 9 volumes of RIPA Buffer (150 mM sodium chloride, 50 mM Tris, 1% NP-40, 0.5% sodium deoxycholate, 0.1% sodium dodecyl sulfate) or phosphate buffered saline plus complete protease inhibitors (PBS) (Roche Applied Science) by mechanical disruption using a dounce homogenizer.

Total protein content was determined using the DC protein Assay (Biorad). Samples that were homogenized in PBS were treated with PNGase F (15 U/μg protein) (New England Biolabs) for 3 hours shaking at 37°C to cleave N-linked glycans. The resultant total brain protein and recombinant protein samples were denatured in SDS denaturing buffer (Invitrogen) and β-mercaptoethanol for 10 minutes at 100°C, prior to separation by SDS-PAGE gel electrophoresis using precast 16% or 4-20% Tris-glycine gels (Invitrogen). Proteins were transferred to PVDF membrane prior to blocking in 5% milk PBS for 1 hour before incubating over-night with primary antibody at 4°C. Membranes were then incubated with an anti-rabbit secondary antibody (Sigma-Aldrich) conjugated to alkaline phosphatase prior to development with CDP-Star (Roche Applied Sciences) and exposure to X-ray film. See-Blue plus 2 (Invitrogen) was used as a molecular weight marker.

#### Immunohistochemistry

Whole Tc1 and non-transchromosomal control mouse brain was fixed by immersion in 10% buffered formal saline (Pioneer Research Chemicals). Following further washing for 24 hr in 10% buffered formal saline, tissue samples were processed and embedded in paraffin wax. Sections were cut at a thickness of 4 μm. Alternatively brains were protected in Tissue-Tek (Siemens Healthcare Diagnostics) and frozen by immersion in isopentane chilled with liquid nitrogen. Frozen sections were cut at a thickness of 10 μm on a cryostat and air dried prior to staining. Paraffin-embedded sections were pre-treated by protease digestion. Staining with the rabbit polyclonal antibodies was undertaken using a Ventana automated immunohistochemical staining machine (Ventana Medical Systems, Tuscon, AZ, USA) as described previously [16]. A biotinylated-anti-rabbit IgG secondary antibody (iView SA-HRP, Ventana Medical Systems) was used before development with 3'3 diaminobenzidine tetrachloride as the chromogen (iView DAB, Ventana Medical Systems). Haematoxylin was used as the counter-stain.

#### Acknowledgements

We thank Ray Young for help with preparation of the figures and Ruth Chia for recombinant SOD1 proteins. VLJT is funded by the UK Medical Research Council, the AnEUploidy grant from Framework Programme 6 from the European Union Commission, the Leukaemia Research Fund and the Wellcome Trust; FKW, OS and EMCF are funded by the UK Medical Research Council, the Wellcome Trust, the AnEUploidy grant from Framework Programme 6 from the European Union Commission and the Fidelity Foundation. These funding bodies had no role in the design of this study or the decision to publish these data.

#### Author details

<sup>1</sup>Department of Neurodegenerative Disease, UCL Institute of Neurology, Queen Square, London WC1N 3BG, UK. <sup>2</sup>MRC National Institute for Medical Research, The Ridgeway, Mill Hill, London NW7 1AA, UK.

#### Authors' contributions

FW carried out the bioinformatic searches, immunohistochemistry and some RT-PCRs and western blots, analysed the data and assisted in drafting the manuscript. OS carried out the some RT-PCRs and western blots and assisted in drafting the manuscript. JL and SB assisted with IHC data collection and analysis. EF and VT conceived the study, and participated in its design and coordination and helped to draft the manuscript. All authors read and approved the final manuscript

#### Competing interests

The authors declare that they have no competing interests.

Received: 15 March 2010 Accepted: 20 August 2010

Published: 20 August 2010

#### References

1. Wiseman FK, Alford KA, Tybulewicz VL, Fisher EM: **Down syndrome—recent progress and future prospects.** *Hum Mol Genet* 2009, **18**:R75-R83.
2. O'Doherty A, Ruf S, Mulligan C, Hildreth V, Errington ML, Cooke S, Sesay A, Modino S, Vanes L, Hernandez D, et al: **An aneuploid mouse strain carrying human chromosome 21 with down syndrome phenotypes.** *Science* 2005, **309**:2033-2037.
3. Galante M, Jani H, Vanes L, Daniel H, Fisher EM, Tybulewicz VL, Bliss TV, Morice E: **Impairments in motor coordination without major changes in cerebellar plasticity in the Tc1 mouse model of Down syndrome.** *Hum Mol Genet* 2009, **18**:1449-1463.
4. Morice E, Andreae LC, Cooke SF, Vanes L, Fisher EM, Tybulewicz VL, Bliss TV: **Preservation of long-term memory and synaptic plasticity despite short-term impairments in the Tc1 mouse model of Down syndrome.** *Learn Mem* 2008, **15**:492-500.
5. Reynolds LE, Watson AR, Baker M, Jones TA, D'Amico G, Robinson SD, Joffre C, Garrido-Urbani S, Rodriguez-Manzaneque JC, Martino-Echarri E, et al: **Tumour angiogenesis is reduced in the Tc1 mouse model of Down's syndrome.** *Nature* 2010, **465**:813-817.
6. Stoll C, Alembik Y, Dott B, Roth MP: **Study of Down syndrome in 238,942 consecutive births.** *Ann Genet* 1998, **41**:44-51.
7. Devlin L, Morrison PJ: **Mosaic Down's syndrome prevalence in a complete population study.** *Arch Dis Child* 2004, **89**:1177-1178.
8. Papavassiliou P, York TP, Gursoy N, Hill G, Nicely LV, Sundaram U, McClain A, Aggen SH, Eaves L, Riley B, et al: **The phenotype of persons having mosaicism for trisomy 21/Down syndrome reflects the percentage of trisomic cells present in different tissues.** *Am J Med Genet A* 2009, **149A**:573-583.
9. Kingsbury MA, Friedman B, McConnell MJ, Rehen SK, Yang AH, Kaushal D, Chun J: **Aneuploid neurons are functionally active and integrated into brain circuitry.** *Proc Natl Acad Sci USA* 2005, **102**:6143-6147.
10. Rehen SK, Yung YC, McCreight MP, Kaushal D, Yang AH, Almeida BS, Kingsbury MA, Cabral KM, McConnell MJ, Anliker B, et al: **Constitutional aneuploidy in the normal human brain.** *J Neurosci* 2005, **25**:2176-2180.
11. Kingsbury MA, Yung YC, Peterson SE, Westra JW, Chun J: **Aneuploidy in the normal and diseased brain.** *Cell Mol Life Sci* 2006, **63**:2626-2641.
12. Jameson BA, Wolf H: **The antigenic index: a novel algorithm for predicting antigenic determinants.** *Comput Appl Biosci* 1988, **4**:181-186.
13. Claros MG, Vincens P: **Computational method to predict mitochondrially imported proteins and their targeting sequences.** *Eur J Biochem* 1996, **241**:779-786.
14. Emanuelsson O, Brunak S, von Heijne G, Nielsen H: **Locating proteins in the cell using TargetP, SignalP and related tools.** *Nat Protoc* 2007, **2**:953-971.
15. Seko A, Kataoka F, Aoki D, Sakamoto M, Nakamura T, Hatae M, Yonezawa S, Yamashita K: **Beta1,3-galactosyltransferases-4/5 are novel tumor markers for gynecological cancers.** *Tumour Biol* 2009, **30**:43-50.
16. Wadsworth JD, Powell C, Beck JA, Joiner S, Linehan JM, Brandner S, Mead S, Collinge J: **Molecular diagnosis of human prion disease.** *Methods Mol Biol* 2008, **459**:197-227.
17. Otterson GA, Flynn GC, Kratzke RA, Coxon A, Johnston PG, Kaye FJ: **Stch encodes the 'ATPase core' of a microsomal stress 70 protein.** *EMBO J* 1994, **13**:1216-1225.
18. Sultan M, Piccini I, Balzereit D, Herwig R, Saran NG, Lehrach H, Reeves RH, Yaspo ML: **Gene expression variation in Down's syndrome mice allows prioritization of candidate genes.** *Genome Biol* 2007, **8**:R91.
19. Valero R, Marfany G, Gonzalez-Angulo O, Gonzalez-Gonzalez G, Puellas L, Gonzalez-Duarte R: **USP25, a novel gene encoding a deubiquitinating enzyme, is located in the gene-poor region 21q11.2.** *Genomics* 1999, **62**:395-405.
20. Valero R, Bayes M, Francisca Sanchez-Font M, Gonzalez-Angulo O, Gonzalez-Duarte R, Marfany G: **Characterization of alternatively spliced products and tissue-specific isoforms of USP28 and USP25.** *Genome Biol* 2001, **2**:RESEARCH0043.
21. Lockstone HE, Harris LW, Swatton JE, Wayland MT, Holland AJ, Bahn S: **Gene expression profiling in the adult Down syndrome brain.** *Genomics* 2007, **90**:647-660.
22. Palmeri D, van Zante A, Huang CC, Hemmerich S, Rosen SD: **Vascular endothelial junction-associated molecule, a novel member of the immunoglobulin superfamily, is localized to intercellular boundaries of endothelial cells.** *J Biol Chem* 2000, **275**:19139-19145.
23. Aurrand-Lions M, Johnson-Leger C, Wong C, Du PL, Imhof BA: **Heterogeneity of endothelial junctions is reflected by differential expression and specific subcellular localization of the three JAM family members.** *Blood* 2001, **98**:3699-3707.
24. McCulloch DR, Le Goff C, Bhatt S, Dixon LJ, Sandy JD, Apte SS: **Adamts5, the gene encoding a proteoglycan-degrading metalloprotease, is expressed by specific cell lineages during mouse embryonic development and in adult tissues.** *Gene Expr Patterns* 2009, **9**:314-323.
25. Gunther W, Skaftnesmo KO, Arnold H, Bjerkvig R, Terzis AJ: **Distribution patterns of the anti-angiogenic protein ADAMTS-1 during rat development.** *Acta Histochem* 2005, **107**:121-131.
26. Kubota H, Hynes G, Willison K: **The eighth Cct gene, Cctq, encoding the theta subunit of the cytosolic chaperonin containing TCP-1.** *Gene* 1995, **154**:231-236.
27. Kubota H, Yokota S, Yanagi H, Yura T: **Structures and co-regulated expression of the genes encoding mouse cytosolic chaperonin CCT subunits.** *Eur J Biochem* 1999, **262**:492-500.
28. Sakoda E, Igarashi K, Sun J, Kurisu K, Tashiro S: **Regulation of heme oxygenase-1 by transcription factor Bach1 in the mouse brain.** *Neurosci Lett* 2008, **440**:160-165.
29. Choi KH, Zepp ME, Higgs BW, Weickert CS, Webster MJ: **Expression profiles of schizophrenia susceptibility genes during human prefrontal cortical development.** *J Psychiatry Neurosci* 2009, **34**:450-458.
30. Mozhui K, Karlsson RM, Kash TL, Ihne J, Norcross M, Patel S, Farrell MR, Hill EE, Graybeal C, Martin KP, et al: **Strain differences in stress reactivity are associated with divergent amygdala gene expression and glutamate-mediated neuronal excitability.** *J Neurosci* 2010, **30**:5357-5367.
31. Gulesserian T, Seidl R, Hardmeier R, Cairns N, Lubec G: **Superoxide dismutase SOD1, encoded on chromosome 21, but not SOD2 is overexpressed in brains of patients with Down syndrome.** *J Investig Med* 2001, **49**:41-46.
32. de Haan JB, Newman JD, Kola I: **Cu/Zn superoxide dismutase mRNA and enzyme activity, and susceptibility to lipid peroxidation, increases with aging in murine brains.** *Brain Res Mol Brain Res* 1992, **13**:179-187.
33. Shin JH, Krapfenbauer K, Lubec G: **Mass-spectrometrical analysis of proteins encoded on chromosome 21 in human fetal brain.** *Amino Acids* 2006, **31**:435-447.
34. Tobin JE, Cui J, Wilk JB, Latourelle JC, Laramie JM, McKee AC, Guttman M, Karamohamed S, DeStefano AL, Myers RH: **Sepiapterin reductase expression is increased in Parkinson's disease brain tissue.** *Brain Res* 2007, **1139**:42-47.
35. Rachidi M, Lopes C, Delezoide AL, Delabar JM: **C21orf5, a human candidate gene for brain abnormalities and mental retardation in Down syndrome.** *Cytogenet Genome Res* 2006, **112**:16-22.
36. Rachidi M, Lopes C, Costantine M, Delabar JM: **C21orf5, a new member of Dopey family involved in morphogenesis, could participate in neurological alterations and mental retardation in Down syndrome.** *DNA Res* 2005, **12**:203-210.
37. Rachidi M, Delezoide AL, Delabar JM, Lopes C: **A quantitative assessment of gene expression (QAGE) reveals differential overexpression of DOPEY2, a candidate gene for mental retardation, in Down syndrome brain regions.** *Int J Dev Neurosci* 2009, **27**:393-398.
38. Lopes C, Chettouh Z, Delabar JM, Rachidi M: **The differentially expressed C21orf5 gene in the medial temporal-lobe system could play a role in mental retardation in Down syndrome and transgenic mice.** *Biochem Biophys Res Commun* 2003, **305**:915-924.

39. Metz RP, Kwak HI, Gustafson T, Laffin B, Porter WW: **Differential transcriptional regulation by mouse single-minded 2s.** *J Biol Chem* 2006, **281**:10839-10848.
40. Ema M, Ikegami S, Hosoya T, Mimura J, Ohtani H, Nakao K, Inokuchi K, Katsuki M, Fujii-Kuriyama Y: **Mild impairment of learning and memory in mice overexpressing the mSim2 gene located on chromosome 16: an animal model of Down's syndrome.** *Hum Mol Genet* 1999, **8**:1409-1415.
41. Fan CM, Kuwana E, Bulfone A, Fletcher CF, Copeland NG, Jenkins NA, Crews S, Martinez S, Puelles L, Rubenstein JL, et al: **Expression patterns of two murine homologs of Drosophila single-minded suggest possible roles in embryonic patterning and in the pathogenesis of Down syndrome.** *Mol Cell Neurosci* 1996, **7**:1-16.
42. Nakamura A, Hattori M, Sakaki Y: **Isolation of a novel human gene from the Down syndrome critical region of chromosome 21q22.2.** *J Biochem* 1997, **122**:872-877.
43. Ferrer I, Barrachina M, Puig B, Martinez dL, Marti E, Avila J, Dierssen M: **Constitutive Dyrk1A is abnormally expressed in Alzheimer disease, Down syndrome, Pick disease, and related transgenic models.** *Neurobiol Dis* 2005, **20**:392-400.
44. Marti E, Altafaj X, Dierssen M, de la LS, Fotaki V, Alvarez M, Perez-Riba M, Ferrer I, Estivill X: **Dyrk1A expression pattern supports specific roles of this kinase in the adult central nervous system.** *Brain Res* 2003, **964**:250-263.
45. Wegiel J, Kuchna I, Nowicki K, Frackowiak J, Dowjat K, Silverman WP, Reisberg B, Deleon M, Wisniewski T, Adayev T, et al: **Cell type- and brain structure-specific patterns of distribution of minibrain kinase in human brain.** *Brain Res* 2004, **1010**:69-80.
46. Harashima C, Jacobowitz DM, Witta J, Borke RC, Best TK, Siarey RJ, Galdzicki Z: **Abnormal expression of the G-protein-activated inwardly rectifying potassium channel 2 (GIRK2) in hippocampus, frontal cortex, and substantia nigra of Ts65Dn mouse: a model of Down syndrome.** *J Comp Neurol* 2006, **494**:815-833.
47. Schein JC, Hunter DD, Roffler-Tarlov S: **Girk2 expression in the ventral midbrain, cerebellum, and olfactory bulb and its relationship to the murine mutation weaver.** *Dev Biol* 1998, **204**:432-450.
48. Wei J, Hodes ME, Piva R, Feng Y, Wang Y, Ghetti B, Dlouhy SR: **Characterization of murine Girk2 transcript isoforms: structure and differential expression.** *Genomics* 1998, **51**:379-390.
49. Greber-Platzer S, Schatzmann-Turhani D, Cairns N, Balcz B, Lubec G: **Expression of the transcription factor ETS2 in brain of patients with Down syndrome—evidence against the overexpression-gene dosage hypothesis.** *J Neural Transm Suppl* 1999, **57**:269-281.
50. Vidal-Taboada JM, Lu A, Pique M, Pons G, Gil J, Oliva R: **Down syndrome critical region gene 2: expression during mouse development and in human cell lines indicates a function related to cell proliferation.** *Biochem Biophys Res Commun* 2000, **272**:156-163.
51. Dunn CA, Medstrand P, Mager DL: **An endogenous retroviral long terminal repeat is the dominant promoter for human beta1,3-galactosyltransferase 5 in the colon.** *Proc Natl Acad Sci USA* 2003, **100**:12841-12846.
52. Ziai MR, Sangameswaran L, Hempstead JL, Danho W, Morgan JI: **An immunochemical analysis of the distribution of a brain-specific polypeptide, PEP-19.** *J Neurochem* 1988, **51**:1771-1776.
53. Ziai R, Pan YC, Hulmes JD, Sangameswaran L, Morgan JI: **Isolation, sequence, and developmental profile of a brain-specific polypeptide, PEP-19.** *Proc Natl Acad Sci USA* 1986, **83**:8420-8423.
54. Utal AK, Stopka AL, Roy M, Coleman PD: **PEP-19 immunohistochemistry defines the basal ganglia and associated structures in the adult human brain, and is dramatically reduced in Huntington's disease.** *Neuroscience* 1998, **86**:1055-1063.
55. Saito Y, Oka A, Mizuguchi M, Motonaga K, Mori Y, Becker LE, Arima K, Miyauchi J, Takashima S: **The developmental and aging changes of Down's syndrome cell adhesion molecule expression in normal and Down's syndrome brains.** *Acta Neuropathol* 2000, **100**:654-664.
56. Barlow GM, Chen XN, Shi ZY, Lyons GE, Kurnit DM, Celle L, Spinner NB, Zackai E, Petteenai MJ, Van Riper AJ, et al: **Down syndrome congenital heart disease: a narrowed region and a candidate gene.** *Genet Med* 2001, **3**:91-101.
57. Bennett BD, Babu-Khan S, Loeloff R, Louis JC, Curran E, Citron M, Vassar R: **Expression analysis of BACE2 in brain and peripheral tissues.** *J Biol Chem* 2000, **275**:20647-20651.
58. Hussain I, Powell DJ, Howlett DR, Chapman GA, Gilmour L, Murdock PR, Tew DG, Meek TD, Chapman C, Schneider K, et al: **ASP1 (BACE2) cleaves the amyloid precursor protein at the beta-secretase site.** *Mol Cell Neurosci* 2000, **16**:609-619.
59. Barbiero L, Benussi L, Ghidoni R, Alberici A, Russo C, Schettini G, Pagano SF, Parati EA, Mazzoli F, Nicosia F, et al: **BACE-2 is overexpressed in Down's syndrome.** *Exp Neurol* 2003, **182**:335-345.
60. Motonaga K, Itoh M, Becker LE, Goto Y, Takashima S: **Elevated expression of beta-site amyloid precursor protein cleaving enzyme 2 in brains of patients with Down syndrome.** *Neurosci Lett* 2002, **326**:64-66.
61. Di Schiavi E, Riano E, Heye B, Bazzicalupo P, Rugarli E: **UMODL1/Olfactorin is an extracellular membrane-bound molecule with a restricted spatial expression in olfactory and vomeronasal neurons.** *Eur J Neurosci* 2005, **21**:3291-3300.
62. Tachikawa M, Watanabe M, Hori S, Fukaya M, Ohtsuki S, Asashima T, Terasaki T: **Distinct spatio-temporal expression of ABCA and ABCG transporters in the developing and adult mouse brain.** *J Neurochem* 2005, **95**:294-304.
63. Tarr PT, Edwards PA: **ABCG1 and ABCG4 are coexpressed in neurons and astrocytes of the CNS and regulate cholesterol homeostasis through SREBP-2.** *J Lipid Res* 2008, **49**:169-182.
64. Michaud J, Kudoh J, Berry A, Bonne-Tamir B, Lalioti MD, Rossier C, Shibuya K, Kawasaki K, Asakawa S, Minoshima S, et al: **Isolation and characterization of a human chromosome 21q22.3 gene (WDR4) and its mouse homologue that code for a WD-repeat protein.** *Genomics* 2000, **68**:71-79.
65. Chen H, Rossier C, Nakamura Y, Lynn A, Chakravarti A, Antonarakis SE: **Cloning of a novel homeobox-containing gene, PKNOX1, and mapping to human chromosome 21q22.3.** *Genomics* 1997, **41**:193-200.
66. Ferretti E, Schulz H, Talarico D, Blasi F, Berthelsen J: **The PBX-regulating protein PREP1 is present in different PBX-complexed forms in mouse.** *Mech Dev* 1999, **83**:53-64.
67. Enokido Y, Suzuki E, Iwasawa K, Namekata K, Okazawa H, Kimura H: **Cystathionine beta-synthase, a key enzyme for homocysteine metabolism, is preferentially expressed in the radial glia/astrocyte lineage of developing mouse CNS.** *FASEB J* 2005, **19**:1854-1856.
68. Pacheco TR, Gomes AQ, Barbosa-Morais NL, Benes V, Ansoorge W, Wollerton M, Smith CW, Valcarcel J, Carmo-Fonseca M: **Diversity of vertebrate splicing factor U2AF35: identification of alternatively spliced U2AF1 mRNAs.** *J Biol Chem* 2004, **279**:27039-27049.
69. Brannvall K, Hjelm H, Korhonen L, Lahtinen U, Lehesjoki AE, Lindholm D: **Cystatin-B is expressed by neural stem cells and by differentiated neurons and astrocytes.** *Biochem Biophys Res Commun* 2003, **308**:369-374.
70. Jansen E, Meulemans SM, Orlans IC, Van de Ven WJ: **The NNP-1 gene (D21S2056E), which encodes a novel nuclear protein, maps in close proximity to the cystatin B gene within the EPM1 and APECED critical region on 21q22.3.** *Genomics* 1997, **42**:336-341.
71. Lu B, Jiang YJ, Zhou Y, Xu FY, Hatch GM, Choy PC: **Cloning and characterization of murine 1-acyl-sn-glycerol 3-phosphate acyltransferases and their regulation by PPARalpha in murine heart.** *Biochem J* 2005, **385**:469-477.
72. Yamakawa K, Gao DQ, Korenberg JR: **A periodic tryptophan protein 2 gene homologue (PWP2H) in the candidate region of progressive myoclonus epilepsy on 21q22.3.** *Cytogenet Cell Genet* 1996, **74**:140-145.
73. Levanon D, Danciger E, Dafni N, Bernstein Y, Elson A, Moens W, Brandeis M, Groner Y: **The primary structure of human liver type phosphofructokinase and its comparison with other types of PFK.** *DNA* 1989, **8**:733-743.
74. Nagamine K, Kudoh J, Minoshima S, Kawasaki K, Asakawa S, Ito F, Shimizu N: **Molecular cloning of a novel putative Ca<sup>2+</sup> channel protein (TRPC7) highly expressed in brain.** *Genomics* 1998, **54**:124-131.
75. Uemura T, Kudoh J, Noda S, Kanba S, Shimizu N: **Characterization of human and mouse TRPM2 genes: identification of a novel N-terminal truncated protein specifically expressed in human striatum.** *Biochem Biophys Res Commun* 2005, **328**:1232-1243.
76. Fonfria E, Murdock PR, Cusdin FS, Benham CD, Kelsell RE, McNulty S: **Tissue distribution profiles of the human TRPM cation channel family.** *J Recept Signal Transduct Res* 2006, **26**:159-178.
77. Hill K, Tigue NJ, Kelsell RE, Benham CD, McNulty S, Schaefer M, Randall AD: **Characterisation of recombinant rat TRPM2 and a TRPM2-like**

- conductance in cultured rat striatal neurones. *Neuropharmacology* 2006, **50**:89-97.
78. Boelaert K, Tannahill LA, Bulmer JN, Kachilele S, Chan SY, Kim D, Gittoes NJ, Franklyn JA, Kilby MD, McCabe CJ: **A potential role for PTTG/securin in the developing human fetal brain.** *FASEB J* 2003, **17**:1631-1639.
79. Melcher T, Maas S, Herb A, Sprengel R, Higuchi M, Seeburg PH: **RED2, a brain-specific member of the RNA-specific adenosine deaminase family.** *J Biol Chem* 1996, **271**:31795-31798.
80. Gerber A, O'Connell MA, Keller W: **Two forms of human double-stranded RNA-specific editase 1 (hRED1) generated by the insertion of an Alu cassette.** *RNA* 1997, **3**:453-463.
81. O'Connell MA, Gerber A, Keller W: **Purification of human double-stranded RNA-specific editase 1 (hRED1) involved in editing of brain glutamate receptor B pre-mRNA.** *J Biol Chem* 1997, **272**:473-478.
82. Mittaz L, Scott HS, Rossier C, Seeburg PH, Higuchi M, Antonarakis SE: **Cloning of a human RNA editing deaminase (ADARB1) of glutamate receptors that maps to chromosome 21q22.3.** *Genomics* 1997, **41**:210-217.
83. Cheon MS, Bajo M, Kim SH, Claudio JO, Stewart AK, Patterson D, Kruger WD, Kondoh H, Lubec G: **Protein levels of genes encoded on chromosome 21 in fetal Down syndrome brain: challenging the gene dosage effect hypothesis (Part II).** *Amino Acids* 2003, **24**:119-125.
84. Hagiwara H, Tajika Y, Matsuzaki T, Suzuki T, Aoki T, Takata K: **Localization of Golgi 58 K protein (formiminotransferase cyclodeaminase) to the centrosome.** *Histochem Cell Biol* 2006, **126**:251-259.
85. Vives V, Alonso G, Solal AC, Joubert D, Legraverend C: **Visualization of S100B-positive neurons and glia in the central nervous system of EGFP transgenic mice.** *J Comp Neurol* 2003, **457**:404-419.
86. Scott HS, Antonarakis SE, Lalioti MD, Rossier C, Silver PA, Henry MF: **Identification and characterization of two putative human arginine methyltransferases (HRMT1L1 and HRMT1L2).** *Genomics* 1998, **48**:330-340.

doi:10.1186/1477-5751-9-7

**Cite this article as:** Wiseman *et al.*: Generation of a panel of antibodies against proteins encoded on human chromosome 21. *Journal of Negative Results in BioMedicine* 2010 **9**:7.

**Submit your next manuscript to BioMed Central  
and take full advantage of:**

- Convenient online submission
- Thorough peer review
- No space constraints or color figure charges
- Immediate publication on acceptance
- Inclusion in PubMed, CAS, Scopus and Google Scholar
- Research which is freely available for redistribution

Submit your manuscript at  
[www.biomedcentral.com/submit](http://www.biomedcentral.com/submit)

